

HOME SCHMIDT HOME





"My house", "my flat", "my home"... We have never had such high expectations for our homes. We have never been so demanding and we have never invested so much time and money in our homes. They reflect our values, they are the place where we can live our different lives, they witness our personal achievements, and they play an essential role in our well-being.

Our homes act as an extension of ourselves. Each and every one of us is unique, so why shouldn't our homes be unique just like us? That is why we have invented Home Design by Schmidt, so that you can break with convention and enjoy a truly personalised interior:

Whoever you are and whatever your interior, Schmidt can draw on its culture of excellence, its ability to inspire and its innovative streak to work alongside you in creating home interior spaces where every single millimetre is designed to meet all your needs and desires. Home interior spaces that are increasingly attractive, intuitive, and optimised. Living spaces that accompany our achievements and allow us to grow.

With Home Design by Schmidt, we transform our customers' homes into a **true haven of well-being**.

HOME SCHMIDT HOME



#ACTSCHMIDT

FOR MORE THAN 60 YEARS, SCHMIDT HAS BEEN
FOCUSED ON **SUPPORTING YOU!**



A wonderful family history

For three generations, Schmidt has been established in France, in the heart of the Alsace region.

Anne Leitzgen, granddaughter of the brand's founder Hubert Schmidt, is currently at the Group's helm and continues to ensure that people form the backbone of the company's history.

"We work hand-in-hand with all our partners."

Schmidt has been awarded
the Sustainable Supplier Relations & Procurement accolade after demonstrating its ability to build sustainable and balanced relationships with its suppliers.

Working together as trusted partners, we go to great lengths to offer products and services of the highest quality.



"Above all, Schmidt draws its strength from a team of men and women who take pride in what they do every day and who are committed to fulfilling their customers' needs."



Over 1,700 employees
at head office

Six production sites in France
and one in Germany



Over 500 showrooms
worldwide

#ACTSCHMIDT

FOR MORE THAN 60 YEARS, SCHMIDT HAS BEEN
FOCUSED ON **PROTECTING THE PLANET!**



"As a leading brand, Schmidt must provide its customers with products that respect the environment and protect their health."



93% of the raw materials and components used to manufacture our products are sourced within Europe.



In an attempt to protect our essential raw material, we use PEFC-certified wood. This label guarantees that the wood has been sourced from forests that are managed in line with environmental, social, and economic requirements.



OUR ORIGIN RANGE
IS A REAL BONUS
FOR THE ENVIRONMENT

To go even further with its determination to protect the environment, Schmidt has developed a collection made from 100% recycled wood panels. Say goodbye to fresh sawn timber and say hello to wood recycled from offcuts in landfills and waste skips, as well as old furniture!



CERTIFIED PRODUCTION SETS
THE BAR EVEN HIGHER

Our company is certified to **ISO 9001, 14001, 45001** and **50001**! Our certification in four international standards guarantees that our products are manufactured to the highest standard in accordance with best practices.



HOME DESIGN BY SCHMIDT

Schmidt is a firm believer in helping improve everyday life with a range of solutions for the entire home. Whether kitchens, dressing rooms, interior solutions or functional partitions, Schmidt provides support and guidance for all your home interior projects, designs new layouts and makes effective use of the available space to incorporate all your activities.



Schmidt's expertise goes far beyond offering furniture for the entire home and also includes global experiences, from lighting through to decorative objects... and even ideas for cooking on your terrace!



Architectural designs for enhanced well-being

There is no need to glimpse into the future to see the homes of tomorrow's world, because we are living in them already. Producing **ergonomic designs**, improving visual comfort and making the space your own will truly bring well-being into the home.

From wall to wall and **floor to ceiling**, we do so much more than simply design and sell units...

We create moods that bring a sense of meaning to your everyday life. Schmidt is taking home designs to the next level by offering a wealth of **ultra-functional partition** and interior solutions.

The kitchen... a cosy space that brings everyone together!

The family is a priority when designing living areas. Making space in the kitchen so that everyone can work and **spend time together** is vitally important.

Whether working from home, watching a film or doing school homework, **our homes need to adapt** to our instant needs.

Above all, the home of tomorrow is a **reassuring**, warm and tender **place**, a cosy refuge tucked away from the outside world.



YOUR HOME DESIGN PROJECTS. OUR PERSONAL FAVOURITES!

Each “Home Schmidt Home” project highlights our customers’ individuality, personality and lifestyle. These awe-inspiring designs offer a much clearer insight into the endless possibilities with our collections and your imagination than any catalogue could possibly do.



Mrs D. - Chasseneuil (France)



Vincent L. - Nivelles (Belgium)



Fevé P. - Champniers (France)



Jean-Marie S. - Saint-Priest (France)



Maryline B. - Saint-Priest (France)



Thibaut P. - Essey (France)



Thomasson B. - Saint-Pair-Sur-Mer (France)



Mathilde S. - Voiron (France)



Jean-Michel D. - Auxerre-Moneteau (France)



Laffond F. - Tourville-La-Riviere (France)



Julien P. - Libourne (France)



Jose A. - Murcia (Spain)



Delabriere K. - Libourne (France)



David - Torre-Del-Mar (Spain)



Coralie V. - Saint-Omer-Arques (France)

GET INSPIRED
FROM THE LATEST TRENDS

1
p.14



WONDER WALL

2
p.22



L'ÉPICERIE

3
p.34



ZEN

4
p.44



ORIGIN

5
p.54



BOTANIC PRINT

6
p.64



STOCKHOLM

7
p.76



NOTTING HILL

8
p.86



ARTY

9
p.98



PRÊTE-MOI TA PLUME

10
p.108



SOUTHAMPTON

11
p.120



BROOKLYN

12
p.130



LAKE DISTRICT

FIND YOUR
SPECIFIC HOME DESIGN



KITCHENS

pages:

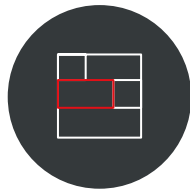
16 - 24 - 36 - 46 - 56
66 - 78 - 88 - 100 - 110
122 - 132



DRESSING ROOMS

pages:

52 - 74 - 84
106 - 126 - 140



INTERIOR SOLUTIONS

pages:

20 - 30 - 40 - 50 - 60
72 - 82 - 94 - 104 - 114
128 - 136



BATHROOMS

pages:

32 - 42
96 - 140

DESIGN YOUR PROJECT



MOVE FORWARD WITH YOUR PROJECT
SET THE TONE
MAKE A LASTING IMPRESSION
SCHMIDT INNOVATION
PREPPING SURFACES
LET'S TALK PRICES

p.144
p.146
p.148
p.156
p.158
p.161

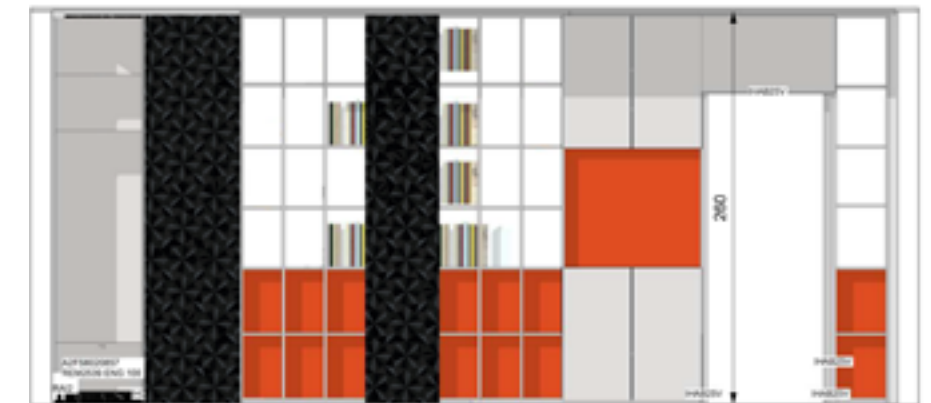
1

WONDER WALL



Jérémie
PRODUCT DEVELOPMENT

To bring structure to an open space or create a separate entrance in a living room, we have designed this double-sided bookcase. It creates a partition without enclosing the space, while offering a mix of open and concealed cubbyholes. The full-height design accentuates the vertical lines of the bookcase and can even be fitted with a door for more privacy.



Warm Colours

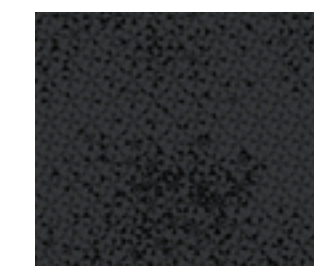
An earthy or bronze colour, like Corten, will bring warmth into the room. Contrasting designs, such as white combined with black or Rio, will create a more urban feel. Adding a warm colour, like mustard yellow or brick, will brighten-up the room... When it comes to designing a truly unique wall, you can be as bold and daring as you like.



Corten



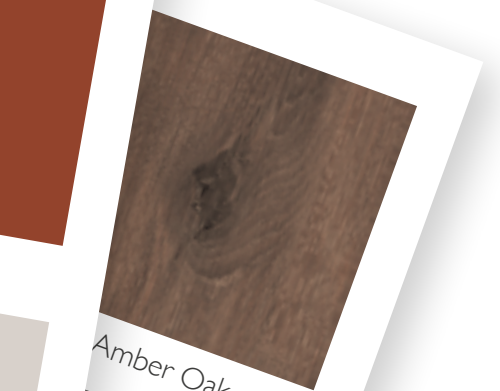
Vison



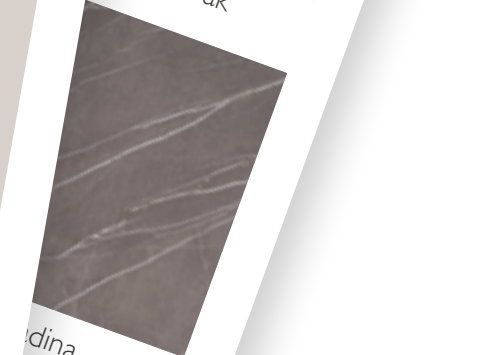
Rio



Clay



Amber Oak



dina

> USE PARTITIONS TO CREATE EVEN MORE STORAGE SPACE

SEPARATE
FOR GREATER
INTIMACY



Wonder Wall

MODEL ARCOS EDITION
Melamine high density particle board
fronts, with a choice of 5 colours
(Corten in the photo).





A multi-purpose splashback to create a highly decorative minibar:



The sleek matt black handle harmonises perfectly with the Corten colour.

Bottles stored like ornaments.



THE ART OF STORAGE: THE ENTRANCE SETS THE TONE



The fitted closet is concealed behind monochrome doors to create a graphical and functional entrance.



A versatile sideboard for storing everyday bags and hats to keep the entrance clean and tidy.

Make a stylish entrance

BESPOKE CLOSET, BOOKCASE AND SIDEBORD

Fitted closet made from melamine high density particle board
(Vison for the structure and fronts in the photo - 26 other melamine colours available).





Anthony Lebossé | DESIGNER
Founding member of the 5•5 design studio

The Épicerie kitchen is not just an area for prepping meals, but an inspiring space offering ample storage. We thought that the best approach would be start from scratch with our plans for the kitchen. We added wire mesh to bring extra functionality and allow the products to breathe, while offering a view of all the produce that can be so inspiring.



Authentic colours

Authentic designs are making a strong comeback in their most obvious form, i.e. raw wood that has been practically untouched.

Wood can be combined with mesh fronts and the warm, seductive Avena colour to produce a cosy and inviting mood.

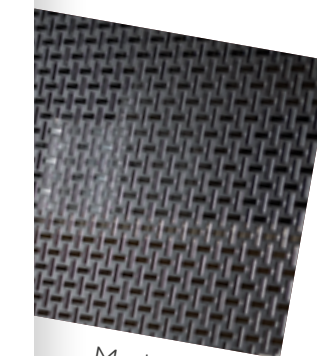
Black units create an industrial-looking kitchen bursting with character.



Avena



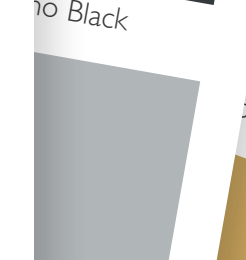
Alabama



Mesh



Clay



no Black



oral

A RELAXING SPACE, WITH PLENTY OF STORAGE FOR GROCERIES



The L'Épicerie concept won the **Janus 2021 de l'Espace de Vie** award from the French Institute of Design in recognition of our concept's modular design and our strategy of delivering solutions to meet everyone's lifestyles.

L'Épicerie

MODEL LOFT

Micron lacquered MDF fronts.
Available in 26 micron lacquer colours
(Avena in the photo).
Alabama worktop and
Fokos Graphite ceramic worktop.
Metal frames, available in 1 colour.





Crate-inspired functional drawers.



Easy-to-reach open shelves after getting back from the market!

Wine bottles stored just like a wine merchant!

TASTING TIME



OLAF STOOL
Oak seat, available in 5 colours.
Metal structure, available in 3 colours.



Montmartre

SIDEBOARD
Melamine high density particle board, with a choice of 26 colours (Clay and Alabama in the photo). Micron lacquered MDF panels, available in 26 colours (Stardust in the photo). Metal frames, available in 1 colour.



Desk

OFFICE
Melamine high density particle board, with a choice of 26 colours (Clay and Alabama in the photo). Micron lacquered MDF panels, available in 26 colours (Coral in the photo). Metal frames, available in 1 colour.



Hotspot

TV UNIT
Micron lacquered MDF panels, available in 26 colours (Coral and Stardust in the photo). Metal frames, available in 1 colour.





ENERGISING MORNINGS



Cubbyholes for tidying away all your products.



Millimetre-perfect bespoke worktop for ultra-easy cleaning.

Factory Chic

MODEL ARCOS

Melamine high density particle board fronts, with a choice of 26 colours (Clay in the photo). Metal frames, available in 1 colour.



Muriel
DESIGNER

The new wood ranges perfectly epitomise the Japandi style, which draws its inspiration from Japan and Scandinavia. The contrast between the natural wood and the grooved wood reinforces the personality of the central island. The worktop matches the wall units and blends seamlessly into the room.



Sober colours

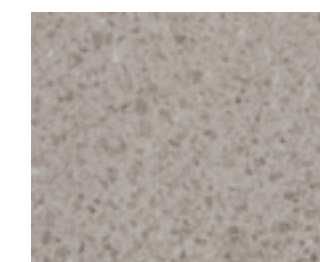
Elegant, sober and trendy, Amber Oak creates a stylish touch and brings nature into the kitchen by producing a haven of peace with a Japanese-like feel. When using light Scandinavian species, go for a contrasting look by choosing from a range of darker colours, including Rio and Sirra.



Amber Oak



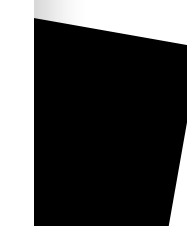
Clay



Yule



Rio



Corten



Sirra



FOCUSING
ON THE
ESSENTIALS

Kitchen Zen

MODEL BOSCA
High density particle board fronts with a knotted oak veneer.
Stained Amber Oak finish. Available in 2 colours.

MODEL BOSCA STRIA
Grooved MDF fronts with a knotted oak veneer.
Stained Amber Oak finish.
Available in 2 colours.





The metal structure of the central island tears up the rule book on kitchen designs.



A multi-purpose splashback for keeping everything within reach!



A sleek handle that brings a rounded and sober touch to the units.



SLEEK STORAGE SOLUTIONS



Eye-catching contrast between the depth of the wood and the softness of the Clay colour.



Maximum storage capacity for a unit with minimalist lines.

Sideboard Zen

SIDEBOARD

High density particle board structure, available in 26 colours (Clay in the photo).

High density particle board fronts with a knotted oak veneer and grooved MDF fronts with a knotted oak veneer (available in 2 colours).

CABINET

High density particle board structure with an Amber Oak finish.

High density particle board fronts, available in 26 colours (Clay in the photo).





IN HARMONY

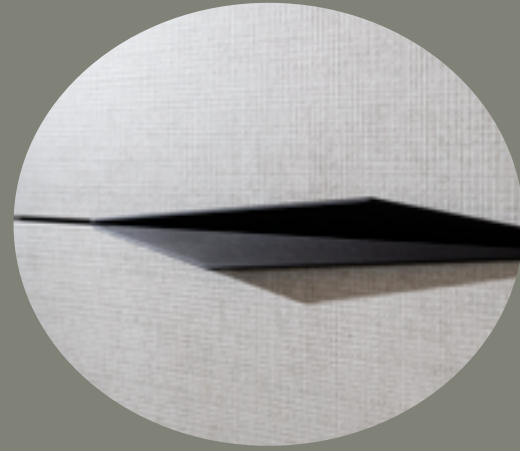


Well organised drawers just like a small Zen garden.

Organic Purity

MODEL ARCOS
Melamine high density particle board fronts, with a choice of 5 colours (Terrazzo in the photo).





Maryline
PRODUCT DEVELOPMENT

If we look at waste as a resource, it can breed creativity and innovation. By developing a range of 100% recycled panels and rugged units with a nice natural finish, we are sending out a clear signal of our commitment to protect the environment.



Ecological colours

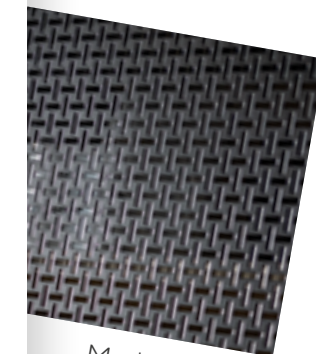
100% recycled panels that have lost none of their beauty! We love the Twist colour and its weave-inspired Bohemian spirit. The organic wood feel of Tavern brings a touch of the country, while combining the two creates an authentic, warm and especially eco-friendly atmosphere.



Twist



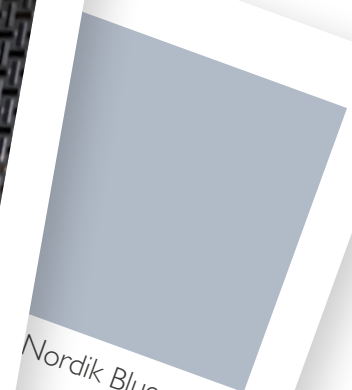
Tavern



Mesh



Celest



Nordik Blue



Ancha

RETURNING
TO RECYCLED
NATURAL
MATERIALS

Origin

MODEL ORIGIN
100% recycled melamine high
density particle board fronts
(Twist finish in the photo).
Available in 3 colours.



M
C
J
P
A



The perfect place
for your oven gloves
and utensils!



New handle designed for Schmidt
to bring a modern touch.

The ideal unit for tidying away
your bread boards and even your jars.

ONE UNIT, THREE APPLICATIONS



A drawer for hiding the kids' toys.



An enjoyable reading area next to the bookcase.

Verone

BESPOKE WALL SYSTEM

100% recycled melamine high density particle board
(Twist and Tavern finishes in the photo).
Available in 3 colours.





THE ART OF TRANSFORMING A LANDING INTO A LARGE BEDROOM

Wardrobe

100% recycled melamine high density particle board
(Twist finish in the photo). Available in 3 colours.
Melamine high density particle board (Alabama and
Celest colours in the photo). Available in 26 colours.



BOTANIC PRINT



Marco
DESIGNER

In this beautiful open room, we have created a kitchen area and an office area using a one-piece interior solution featuring a wealth of storage. To separate the two areas without enclosing them while producing an original design, we chose the Botanic Black print to add a splash of nature in an otherwise urban inspired environment.



Botanic colours

Designs that embrace Toile de Jouy patterns have never been more on-trend. Botanic Black draws its inspiration from the pattern to demonstrate its originality and give the units added character.

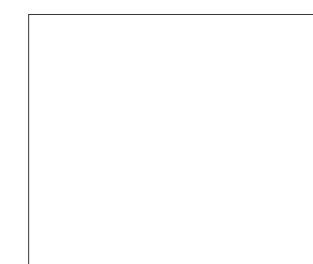
With this botanic print, you can mix and match warm and soft tones, such as Mossa, to create a refined yet modern atmosphere.



Botanic Black



Mossa



Iron Blush



Clay



Grey



Oak

THE ART OF CREATING A PARTITION

Kitchen Botanic Black

MODEL LOFT

Micron lacquered MDF fronts. Available in 26 hydro lacquer colours (Mossa in the photo).

MODEL PRINT 22

High density particle board fronts with a digitally printed finish (Botanic Black finish in the photo). Available in 22 colours. Emerson mat laminate worktop.





A pull-out shelf to keep the worktop clutter-free.



The exquisite details of a copper handle for extra style.

The plush stools are an open invitation for a lengthy chat.

A COSY AREA
FOR WORKING
OR RELAXING



A bespoke drawer for storing
your record collection.

Office-Bookcase
Botanic Black

MODEL LOFT AND MODEL PRINT 22
100% recycled high density particle board structure,
available in 3 colours (Twist in the photo).
Lacquered MDF fronts, available in 26 colours
(Mossa in the photo).
High density particle board fronts
with a digitally printed finish, available in 22 colours
(Botanic Black in the photo).





AN OPTIMISED OFFICE SPACE



Indirect lighting to soothe the eyes.

Open Space

DESK
Laminate worktop, available in 38 colours
(Matt Emerson in the photo).





> CREATE A SLEEK AND HARMONIOUS LIVING SPACE



Jean Michel
PRODUCT DEVELOPMENT

This kitchen features an attractive Scandinavian look with strong and discreet graphic elements that seamlessly accommodate the room's constraints. We have combined several door opening systems to create a sleek and practical kitchen. Our ongoing challenge is combining beauty with practicality, and this design is a perfect example!



Mineral colours

The Scandinavian style is getting a makeover with warmer colours that continue to elicit a sensation of cosiness and well-being.

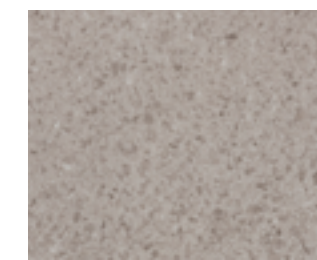
These natural colours draw their inspiration from materials such as rock, wood and silk. They harmonise in a subtle monochrome design to create a timeless and reassuring interior.



Nano Claystone



Cognac



Marmor



Clay



Nano Black



son



HOMAGE TO SIMPLICITY

Stockholm

MODEL ARCOS SUPERMAT 20 EOLIS (with a built-in profile)

Laminate high density particle board fronts, with an ultra-matt finish and a choice of seven colours (Nano Claystone finish in the photo).
Nano Claystone laminate worktop. Laminate splashback (Marmor finish in the photo).





The skilful combination of a discreet built-in profile at the top of the drawer, combined with a system for easily opening the front with just a simple press.



Functional bespoke units for showcasing the refined tableware and ornaments.

Stylish handleless full-height cabinets for making effective use of the available space.

A DINING AREA

Into the wood

Melamine high density particle board structures and fronts (Clay colour in the photo).
Laminate high density particle board fronts, with an ultra-matt finish and a choice of seven colours (Nano Claystone finish in the photo).





Wall of sound

TV UNIT

Melamine high density particle board structures and fronts (Clay colour in the photo). Laminate high density particle board fronts, with an ultra-matt finish and a choice of seven colours (Nano Claystone finish in the photo).



Box Office

DESK

Laminate high density particle board fronts, worktop and structure, with an ultra-matt finish and a choice of seven colours (Nano Claystone finish in the photo).



AN OVERSIZE DRESSING ROOM:
A LIFE-CHANGER!



An ultra-practical and discreet desk that seems to disappear into the dressing room when closed.



With its pull-out shelves, you can store two piles of clothes, one in front of the other.

Behind the scenes

Melamine high density particle board,
with a choice of 26 colours
(Magnus and Osaka in the photo).
Glass door with a Casablanca pattern.





Léa
DESIGNER

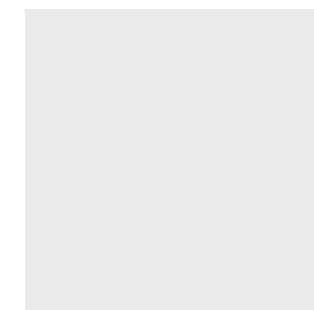
Wood brings a warm and authentic look to our units and your interiors. Drawing strength from our expertise, we have developed 5 real wood ranges that cover all the styles and will appeal to people who love beautiful materials.



Colours that are so British

We are giving the shaker style a makeover with light wood and comfortable natural materials that conjure up images of the English countryside.

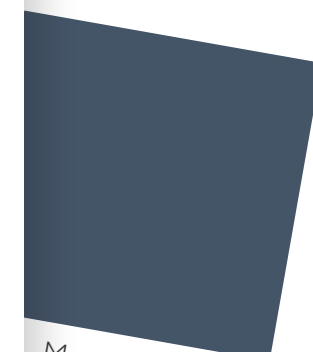
The combination of the solid wood fronts in Harvey light wood and the ever so soft Celest colour creates a warm, timeless and sober atmosphere.



Celest



Harvey



Moody Blue



Green Tea



Cardust



Anolia

SO BRITISH!

Classic

MODEL NEBRASKA

Solid oak fronts. Open grain lacquered
ash veneered central panel
(open grain Celest in the photo).
Available in 10 open grain lacquer colours.
Worktop in Quartzo Lyskam.





A glass-fronted wall unit with built-in lighting to showcase the beautiful dinnerware.



An under-mounted bowl for even easier cleaning

A useful unit with drawers for a decorative touch and practical storage.

A BESPOKE
BOOKCASE
WITH A HIGHLY
DECORATIVE LOOK

Oxford

BESPOKE BOOKCASE
Melamine high density particle board
(Celest colour in the photo).

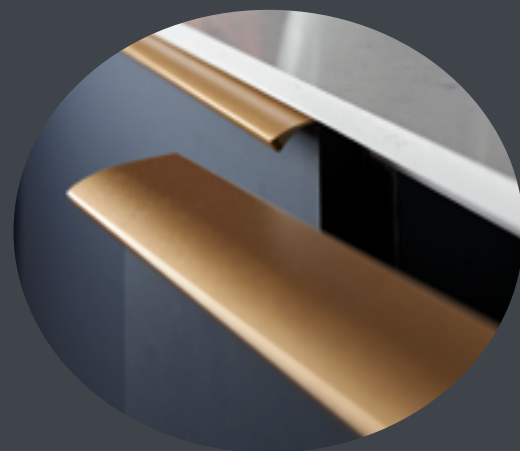


A BESPOKE
WARDROBE
GIVES PERFECT
STORAGE
CAPACITY

Gallery

ENTRANCE CLOSET
Melamine high density particle board,
with a choice of 26 colours
(Celest in the photo).





> A BESPOKE SPACE IN THE ART DECO SPIRIT



Jérémie
PRODUCT DEVELOPMENT

There were two challenges when designing a kitchen in this confined space, namely offering maximum storage and emphasising the art deco style treasured by its owners. Our solution was to use bespoke full-height cupboards in a similar vein to a bookcase while playing with the colours to bring added style.



Bold colours

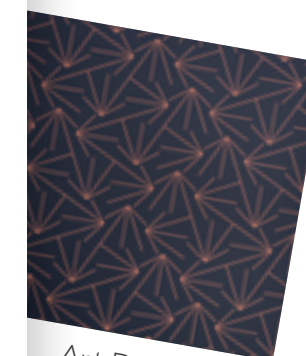
Navy blue is the new black!
This elegant colour is now a must-have for our home interiors...
This deep blue has been combined with a trendy art deco pattern to produce a clearly creative, refined and intimate atmosphere. Art deco is so much more than a style. Ever since it emerged in the Roaring Twenties, its popularity has never waned with its ability to bring a stylish touch of sophistication to our home interiors.



Navy



Scala



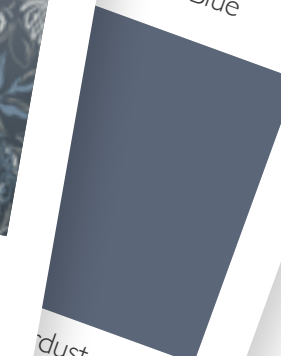
Art Deco



Jungle



Moody Blue



Dust

AN ART DECO INSPIRED KITCHEN

Pictorial

MODEL SOFT EOLIS

MDF fronts with a soft-touch ultra-matt
lacquered melamine surface,
available in 5 colours
(Soft Navy in the photo).

MODEL PRINT

Melamine high density particle board with
digitally printed fronts
(Art Deco print in the photo).
Scala laminate worktop.





With Work&Cook, the bespoke ceramic insert incorporated into the worktop, pastry can be rolled out in the blink of an eye.



A well-organised accessory where each container has the right lid.

The worktop with its built-in sink guarantees effortless cleaning.

THE ART OF TABLE
DRESSING



Art Deco

CERAMIK TABLE

5 mm-thick ceramic table top bonded to a high density particle board panel.
Marmo Nero colour.
Available in 5 table top colours.
Black lacquered metal structure.
Available in 3 colours. Two butterfly leaves.

MELODI CHAIR

Volluto Rosa velvet seat. Available in 3 colours.
Gold Dream lacquered metal structure, available in 2 colours.





Imperial

MDF fronts with a soft-touch ultra-matt lacquered melamine surface, available in 5 colours (Soft Navy in the photo).



Pedestal

MDF fronts with a soft-touch ultra-matt lacquered melamine surface, available in 5 colours (Soft Navy in the photo).

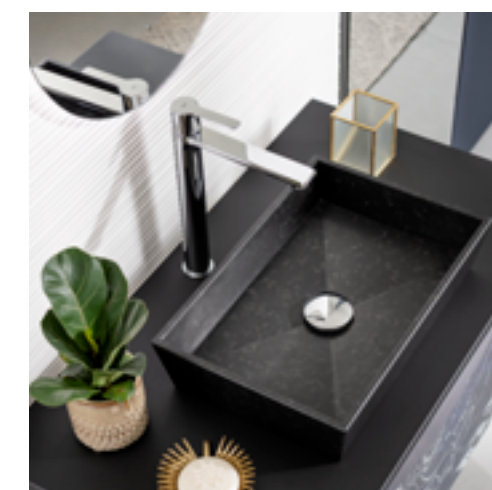




NOT JUST A BATHROOM,
A WORK OF ART



Jungle, the new print finish from Schmidt for personalising your home interior.



Black granite basin for a natural effect.

Tropical Immersion

MODEL PRINT 22
Melamine high density particle board with digitally printed fronts (Jungle print in the photo). Available in 22 colours.



9

PRÊTE-MOI TA PLUME



SACHA WALCKHOFF
Creative Director
Christian Lacroix

This is the second time that Christian Lacroix and Schmidt have worked together. This time, Christian Lacroix has specifically designed the "Prête-Moi Ta Plume" pattern for Schmidt, a graphical print featuring a swirling arrangement of multi-coloured feathers.

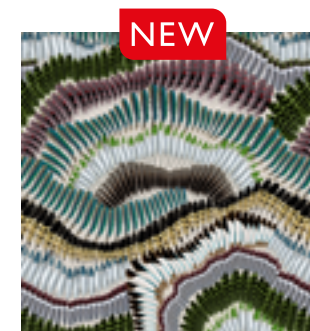
Christian Lacroix
MAISON
SCHMIDT

Daring colours

These designs reflect the rich and creative world of Christian Lacroix.

Unleash your daring streak with the deep and bright Sencha and Coral colours, combined with the delicate and original touch of a pattern featuring swirling dreamlike feathers.

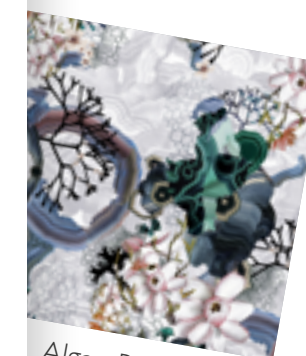
Whether flamboyant or intimate, reveal your style!



Prête-Moi Ta Plume



Sencha



Algae Bloom



Coral

en Rose

lest



A DREAMLIKE DESIGN

Kitchen Prête-Moi Ta Plume

MODEL ARCOS SOFT

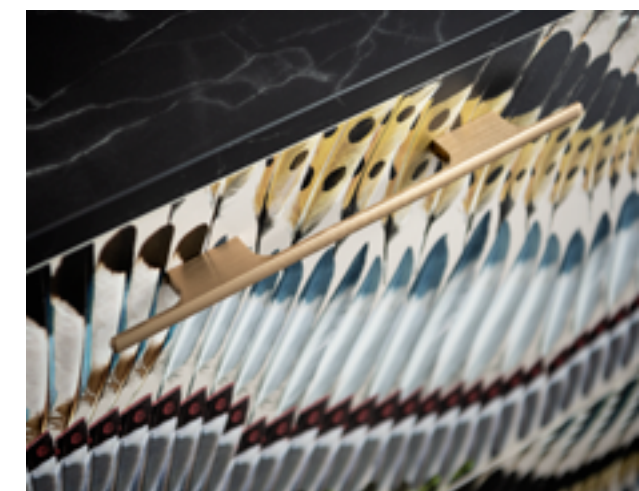
MDF fronts with a soft-touch ultra-matt lacquered melamine surface, available in 5 colours (Soft Navy in the photo).

MODEL PRINT 22

Melamine high density particle board with digitally printed fronts (Prête-Moi Ta Plume print in the photo). Nano Black Marmor laminate worktop.



The rounded corners of the worktop offer a touch of softness in the kitchen.



A stylish handle offering a comfortable grip.

A well-lit worktop for even easier use.



REFINEMENT LIES
IN THE DETAILS

In vogue

SIDEBOARD
Melamine high density particle board structure - Caneo matt in the photo (26 other melamine colours available). MDF fronts with a soft-touch ultra-matt lacquered melamine surface (5 other soft-touch lacquer colours available). Decorative back panel featuring the exclusive Schmidt-Lacroix "Prête-Moi Ta Plume" print.



A FLAMBOYANT
DRESSING ROOM



Organised accessories and printed cubbyholes replicating the finish on the dressing room's doors.

Dressing room
Prête-Moi Ta Plume

MODELS LOFT AND PRINT 22

Fitted wardrobe made from micron lacquered MDF panels (exclusive Schmidt-Lacroix "Prête-Moi Ta Plume" print in the photo and "La vie en rose" - 26 other micron lacquer colours available).

Dressing table made from micron lacquered MDF panels ("La vie en rose" in the photo - 26 other micron lacquer colours available) and laminate high density particle board with an ultra-matt surface (Nano Black in the photo - 7 other Nano colours available).



SOUTHAMPTON



Jonathan
DESIGNER

This open plan kitchen blends seamlessly into the living area and provides an added sense of grandeur. By choosing stylish wall units and delicate colours, we have created a pure and bright space.



Daring colours

Say goodbye to sterile whites and embrace beige tones proudly asserting their organic origins. Kashmir Grey and Iceland come together in perfect harmony to bring extra comfort to the room. The beige colours stand out with their refined neutrality and their touch of sophistication for home interiors where peace and serenity reign supreme.



THE DESIGN
THAT BREATHES
ELEGANCE



MODEL ARCOS

Melamine high density particle board;
Kashmir grey and Iceland in the photo.
Iceland laminate worktop.





The difference in depth between the wall units and the storage cabinets creates a well-defined prepping area.



The stainless steel recesses with their contemporary design showcase this kitchen's sleek appearance.

A HANDS-DOWN WINNER!



Drawers with easy access to all the contents.



Height-adjustable shelves for bespoke storage.

Square larder

Melamine high density particle board, with a choice of 10 colours (Caneo and Harvey finish in the photo).



BOTH FUN
AND PRACTICAL!

Buffalo

TV UNIT

Melamine high density particle board,
with a choice of 26 colours
(Harvey finish and Celest colour in the photo).

Laminate high density particle board,
with a choice of 7 colours
(Nano Sencha in the photo).



SWEET
DREAMS!



A sophisticated and stylish fitted wardrobe that conceals a dressing table and a wealth of storage possibilities.

Hidden treasures

BESPOKE WALL SYSTEM

Melamine high density particle board fronts
(Harvey finish and Celest colour in the photo).
Available in 26 colours.





> BRING A LARGE OPEN SPACE TO LIFE



Véronique
DESIGNER

A straight-line kitchen is always a good idea in a room with a large surface area. With its built-in extractor hood and larder containing pull-out drawers, this kitchen is just as stylish as it is practical!



Audaciously daring colours

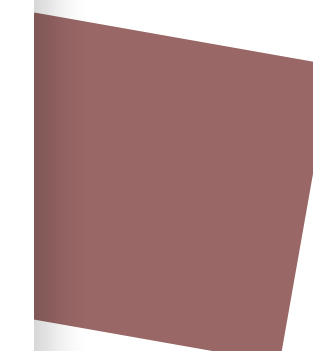
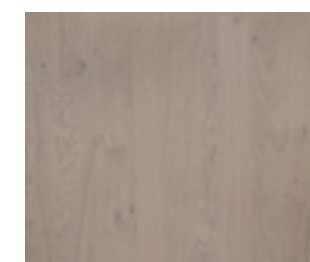
Go for the ultimate in stylish designs with a concrete-effect finish! Whether smooth, textured, coloured or natural, this material will completely transform your home interior. When contrasted with the timeless and stylish MATT CANEO, our MARVEL finish brings added character to a cosy and soothing atmosphere.



Marvel



Caneo



Coral



Rio



Murphy



City Blue

BLACK & CONCRETE



MODEL MELA AND MELA PLUS
Melamine high density particle board
(Caneo and Marvel in the photo).
Marvel laminate worktop.





The deli-style larder cabinet can be used to store and keep all your produce and groceries within easy reach.



The smart drawer unit has plenty of space for all your saucepans and their lids as well as your kitchen utensils.

A NEAT AND TIDY ENTRANCE

Dring

MODEL ARCOS

Melamine high density particle board, with a choice of 10 colours (Caneo colour and Vintage Oak finish in the photo). Mirror door and Vintage Oak colour.



INTERIOR
SOLUTIONS
THAT HIT
ALL THE
RIGHT NOTES

Backstage

Melamine high density particle board, with a choice of
26 colours (Vintage Oak and Everest in the photo).





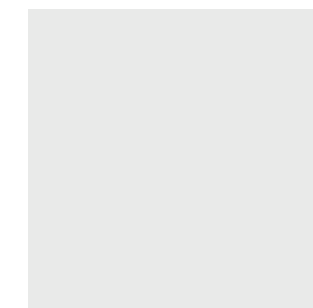
Jean-Philippe
PRODUCT DEVELOPMENT

This kitchen with its pastoral charm includes a clever storage unit for hiding away your appliances when not in use, making it easy to prepare breakfast every morning.



Daring colours

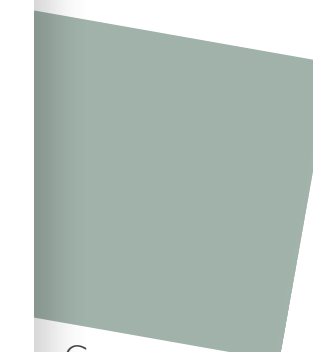
More nuanced than white, CELEST is a light and stylish colour that is perfect for adding a splash of elegance to the home. Another of today's hottest trends in interior design is wood. Refined and warm VINTAGE OAK is a perfect match for any home interior while offering a touch of nature.



Celest



Vintage Oak



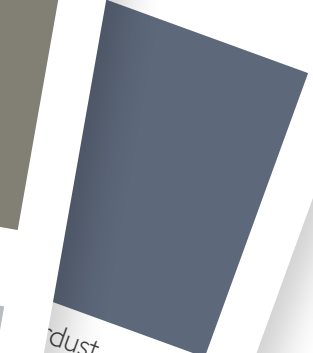
Green Tea



Caneo



Mossa



Dust

COUNTRY
INSPIRATION



MODEL FRAME

Melamine high density particle board (Everest in the photo).
Vintage oak laminate worktop.





This large pan drawer unit is the perfect solution for storing and keeping all your pots and pans within easy reach.



An optimised all-in-one island with a sink, sink unit prepping surface and dining area.



THE STYLISH ALTERNATIVE TO A HOME CINEMA



The screen can be effortlessly concealed behind an elegant sliding door.



A glass-fronted unit for displaying beautiful objects or keeping fragile possessions safe.

Cinecitta

BESPOKE TV UNIT

Melamine high density particle board, with a choice of 26 colours (Caneo and Everest in the photo). Laminate high density particle board with an ultra-matt surface, available in 7 colours (Nano Sirra colour and Nano Black Marmor finish in the photo).



AN EYECATCHING DESIGN TO SHOWCASE THE FIREPLACE!



Built-in work station that integrates with the room.



A sophisticated and hard-wearing ceramic table top, available in 5 colours. Two butterfly leaves for large dinner parties.

Bellissima

BESPOKE BOOKCASE

Melamine high density particle board, with a choice of 26 colours (Cane and Alabama finish in the photo). Laminate high density particle board with an ultra-matt surface, available in 7 colours (Nano Black Marmor finish in the photo).



WALK-IN
WARDROBE
ON ONE SIDE,
BATHROOM
ON THE OTHER

Ultimate
peace of mind

MODEL ARCOS SUPERMAT 20

Laminate high density particle board fronts
with an ultra-matt surface, available in 7 colours
(Nano Black Marmor finish in the photo).

MODEL LOFT

Micron lacquered MDF fronts,
available in 26 colours
(La Vie en Rose in the photo).



► DESIGN *your project*

With a healthy dose of inspiration from our catalogue and website, you can count on us to guide you through your project every step of the way.

The following pages should help you picture your project more clearly in your mind, while showing the different possibilities available. This is the first step before actually meeting our designers in the showroom.

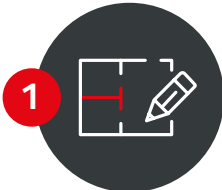
Our designers will help you create a home interior that showcases your life story and reflects your lifestyle.

HOME **SCHMIDT** HOME



MOVE YOUR PROJECT FORWARD WITH YOUR DESIGNER FOR PEACE OF MIND GUARANTEED

From idea to installation, from dream to reality, you can count on our support every step of the way. Whether in the showroom, or remotely if you prefer, we will stay in touch throughout your project and even afterwards!



GET INSPIRED AND PREPARE YOUR PROJECT

Our website is designed like a toolbox and mood board. Pay it a visit!



- Find and save your inspirations on the **www.homedesign.schmidt website**
- Try out your ideas with the kitchen and interior solutions **3D configurator**.
- Create your **project space** and fill in the details. This means that your designer will be better prepared for your first meeting in the showroom.
- Book your appointment and visit one of the stores to get a quote on your project. Thanks to our solutions, nothing will stand in the way of your dreams!



ARRANGE AN APPOINTMENT in the showroom, over the phone or at home

Have you saved your design in the project space on our website? Now you can book the appointment that suits you best on our website!



- Are you looking for a virtual **appointment with your showroom**? Then ask for a telephone appointment.
- Would you rather meet your designer in person and **explore the showroom**? Then make your request online, by phone or by email.
- Are you on a tight schedule? Would you rather not travel to the showroom? Then you **have the option of an initial home appointment**.



ENJOY A UNIQUE EXPERIENCE IN THE SHOWROOM

Check out our products in the showroom and meet your designer.



- Your designer will personalise your project and present an **ultra-realistic 3D preview**.
- Your designer will then come to **your home** to measure up for your bespoke project.
- **VR headsets** are available in many showrooms so that you can picture your future home interior in virtual reality.
- Finally, you will save precious time with our **e-signature** system.

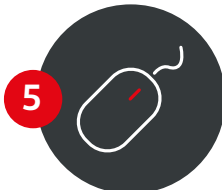


KEEP TRACK OF YOUR PROJECT

After confirming your order, keep track of your project step-by-step in your personal project space.



- Find **all your documents** in your project space and follow the different steps in your project.
- **You will be notified of the delivery** and installation dates by your Schmidt designer.
- **Check project completion:** everything is perfect, clean and fitted. Your designer will check everything and make sure that everything works... even setting the time on your oven.



SHARE YOUR EXPERIENCE

Did you enjoy your Schmidt experience? Share your photos and help those who still haven't made up their minds...



- **Refer your friends!** Share your experience and we will give you a gift as soon as they finalise their projects with us (see terms and conditions in the showroom).
- **Stay tuned** and check out all our new products for your home interior at www.homedesign.schmidt.
- **Post your most beautiful photos** over social networks with **#HomeSCHMIDTHome**. Happy customers are our greatest source of motivation!



SET THE TONE

Pastel, bright, trendy or deep colours... focus on your ideas, play with the Schmidt paint palette and explore the thousands of different combinations.

An **unparalleled choice** of plain colours for your home interior.



www.homedesign.schmidt

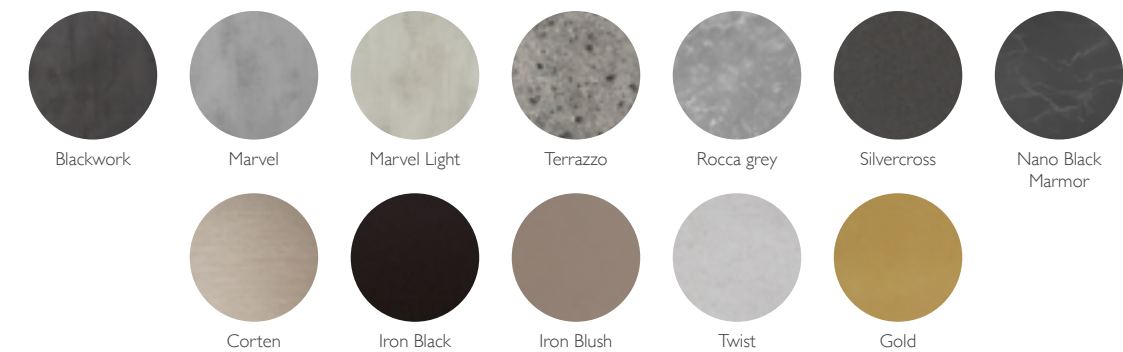
Check out our Kitchen and Interior Solutions **Creativ'Box** configurator and choose your very own colour schemes.

MAKE A STYLISH ENTRANCE

Material effects, lacquer, wood finishes, laminate and melamine will cater for every taste and every budget to create the perfect finish!

Real wood offers an incredible range of possibilities in terms of finishes, tones and patina.

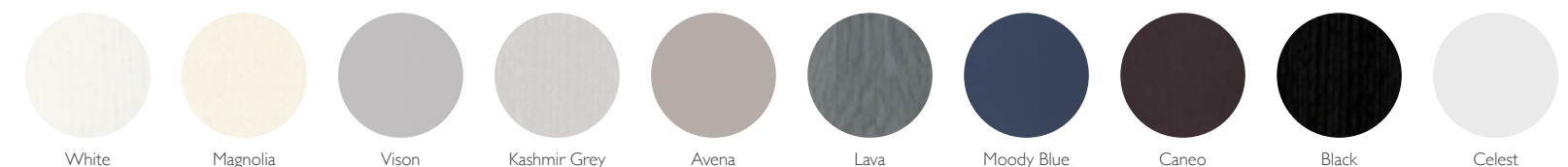
Material and metallic effects



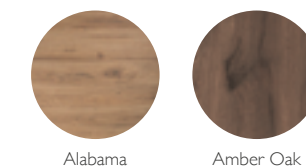
Wood finishes



Matt open grain lacquers



Stained wood



MAKE A LASTING IMPRESSION!

Whether graphical, floral or Japanese-inspired, our new collection of exclusive printed finishes guarantees an original and daring range of designs for creating a truly one-of-a-kind interior.

24 EXCLUSIVE DESIGNS TO ASSERT YOUR STYLE, WHETHER IN SMALL ACCENT AREAS OR FOR THE ENTIRE ROOM!



Botanic black



Botanic coral



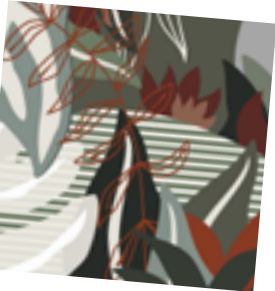
Botanic green



Bloom black



Colorblock blue



Colorblock viva



Watercolor green



Herbarium white



Japan Garden white



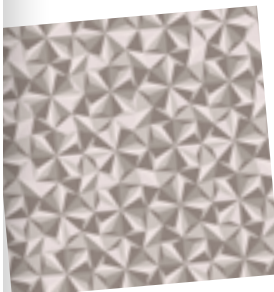
Japan Garden black



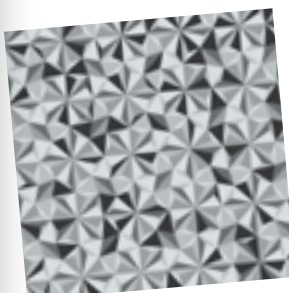
Japan Garden clay



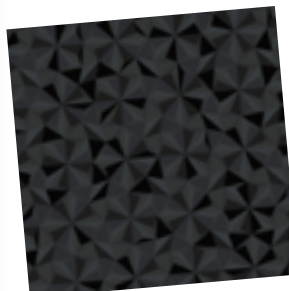
Concrète flower



Origami clay



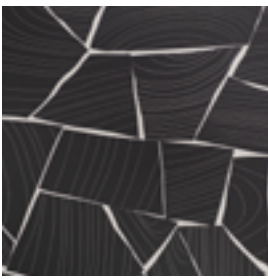
Origami grey



Origami black



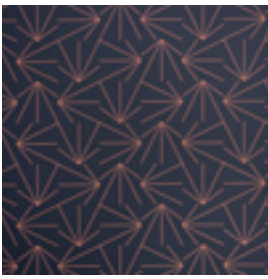
Casablanca



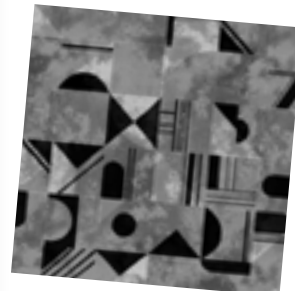
Block



Jungle



Art Deco



Zéli Black



Zéli Rio



Zéli Navy



A PARTNERSHIP WITH DESIGN STUDIOS

Schmidt, **Studio 5•5**, **Studio Cymé** and **Maison Le Callennec** have combined their creativity to deliver this collection of exclusive designs. Whether daring or subtle, they can give your units a modern look and plenty of personality.

Christian Lacroix MAISON

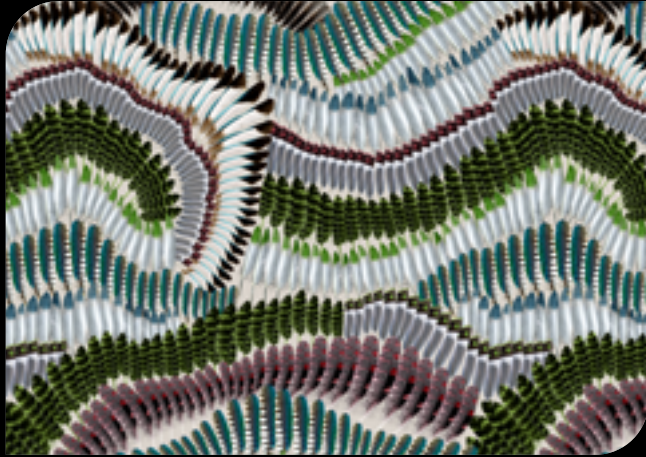
SCHMIDT

Schmidt has teamed up with Christian Lacroix to produce two designs inspired by the brand's rich and creative world. Treat yourself and your home to this original and sophisticated finish with its wealth of subtle details!

Algae Bloom



Prête-Moi Ta Plume



> Visit www.homedesign.schmidt and see all our ranges and colours.

My tastes and my colours

COLOURFUL CARCASES

At Schmidt, we push personalisation to its limits with 24 colours for your carcasses.



24 different colours

At no extra cost.

Your bank account will be happy. All that remains is to choose the colour of the fronts for either a matching design or a contrasting effect. You can easily create a kitchen that reflects your personality.

BRIGHT IDEAS

Each room requires the appropriate lighting. For a functional, discrete or decorative choice, research the different possibilities with your designer. He or she will enlighten you with some invaluable advice.

For the **kitchen**



Base light

Fit your wall units with a lighting system built into the unit base to illuminate your worktop and the inside of the unit.

For **interior solutions**



Illuminated end panel

A discreet solution integrated across the entire height of your wardrobe, so that you can quickly find that black pullover you look so good in.

For the **bathroom**



LED lighting

Whether a powerful light to illuminate your face or soft lighting for a relaxed environment, you can easily change the mood in your bathroom with our LED lights.



LED spotlights

Whether recessed or surface-mounted, you can adjust the brightness and intensity of our spotlights using a remote control or your smartphone, to suit the time of day and current light levels.



Illuminated clothes rail

The LED clothes rail is guaranteed to create your very own showroom atmosphere! The targeted lighting allows you to pick out the different shades of grey or blue without disturbing your loved one's beauty sleep.



Illuminated mirror

This is the ideal solution for every lighting level, meaning that you can clearly see your face without any shadows. Our wide range of models can be tailored to your bathroom bringing a sophisticated designer look.

> Visit www.homedesign.schmidt to see our full lighting collection.

I'm the chef in my kitchen!

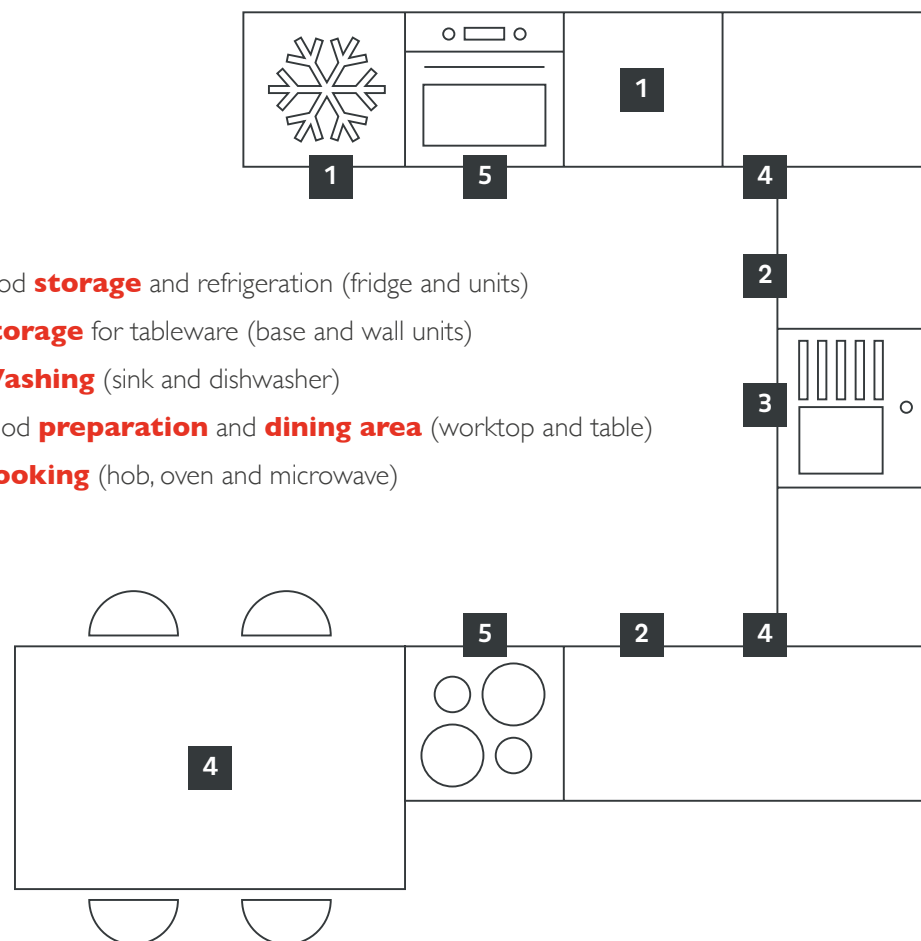
THE RIGHT LAYOUT

Nowadays, the kitchen is the hub of the home.

Not only is it the place where we enjoy cooking, but also the area where we like sharing breakfast with the family or having a cup of tea before heading off to work. That is why our designers ensure they build up an accurate picture of your specific profile before producing a kitchen to suit your lifestyle and everyday requirements. In addition to bringing panache and style to your home, they go to great lengths to create a kitchen where you can carry out your everyday tasks, while reducing unnecessary motion. They will work with you in identifying your **five working areas** before presenting your unique and personalised project.

Simple
organisation
based on five
working areas

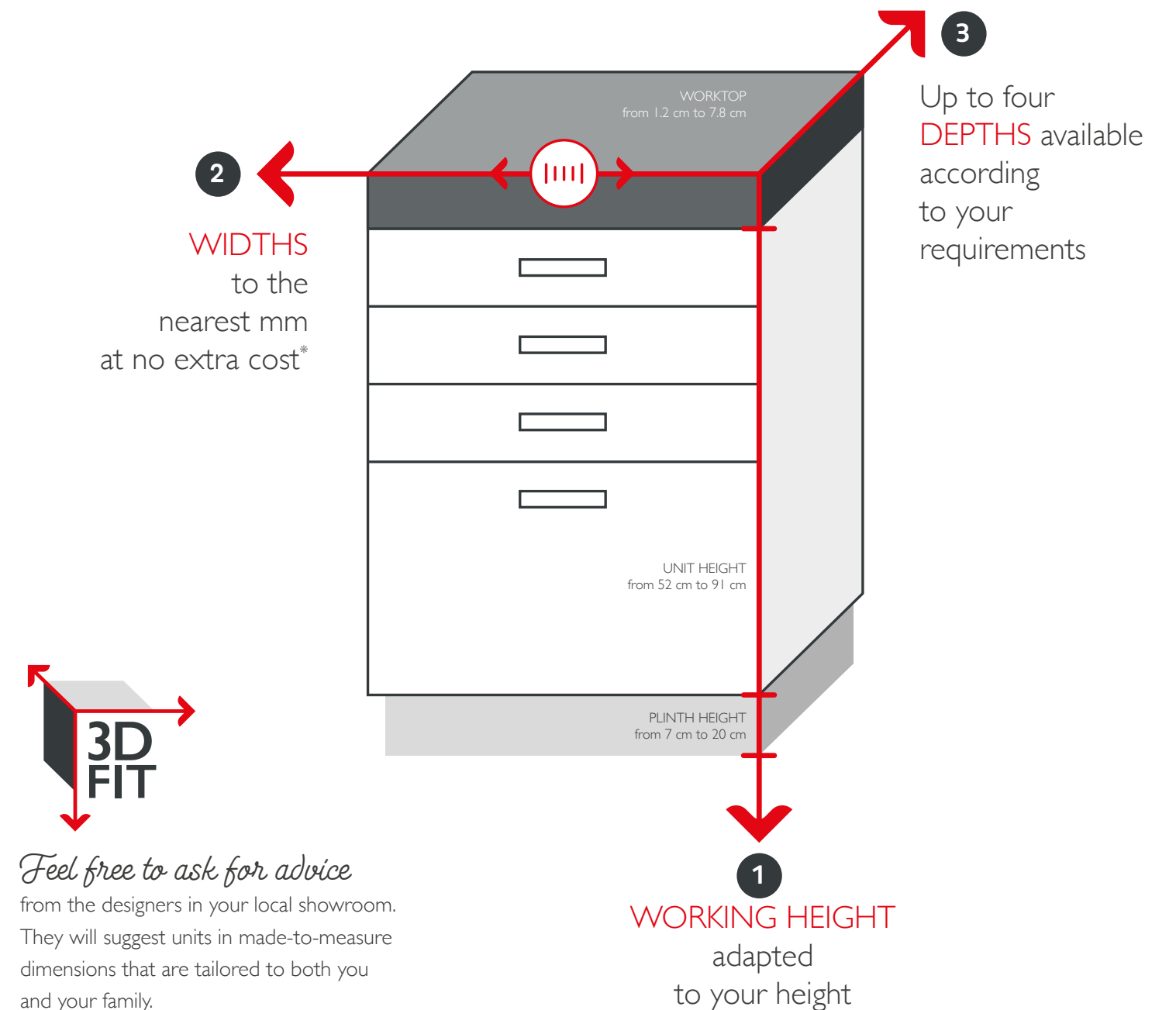
- 1 | Food **storage** and refrigeration (fridge and units)
- 2 | **Storage** for tableware (base and wall units)
- 3 | **Washing** (sink and dishwasher)
- 4 | Food **preparation** and **dining area** (worktop and table)
- 5 | **Cooking** (hob, oven and microwave)



Exclusive to Schmidt

BESPOKE WIDTHS, HEIGHTS AND DEPTHS

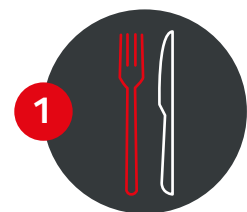
To make best use of the available space and produce a flawless finish, every millimetre counts. With **3D FIT**, Schmidt can adapt the three different dimensions of your units to conjure up even more storage space.



*Up to three made-to-measure units per kitchen at no extra cost, to be chosen from a collection of made-to-measure units (excluding the Sign and Twin finishes), from the Lagune, Glamour, Crystal, Take and framed wooden (not including Major) and MDF ranges.

QUALITY CONTROL FOR ALL OUR BASE UNITS

These figures are worth a thousand words when it comes to explaining the quality of our products!
Whether kitchens, interior solutions or bathrooms, our units are designed to withstand the challenges of everyday life.



1,000 utensils

Our pan drawer runners and drawers are capable of supporting this weight, representing a load of up to 65 kg (for 120 cm-wide pan drawers), even when fully open.

Softer:

Buffers as standard for soft-closing drawers and doors

More practical:

Glass sides as standard and a non-slip mat

Easier access:

With full extension drawers



+ 3 mm

Our units are made from 19 mm-thick panels. This is 3 mm more than most of the standard units on the market, which equates to 25% more load resistance when compared to 16 mm panels.

Stronger:

Our units are assembled with dowels and glue



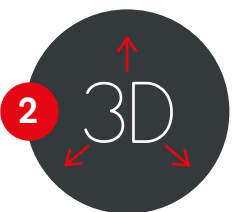
300 plates

can be stored in each wall unit. The hanging brackets can support a load of 200 kg* (including the weight of the unit).

Good to look at:

A flawless unit interior: thanks to the invisible mounting hooks

Both well-designed and ultra hard-wearing,
our wall units can cater for all your storage needs and decorative tastes.



3D

All our doors can be adjusted in the three axes (height, width and depth) to ensure that they are always perfectly aligned.

Safer:

Hinges with a 25-year warranty

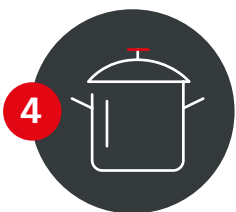
Quieter:

Soft-close as standard



65 kg

The shelves in our units have been engineered to support a weight of 65 kg per m². So you can easily store all your groceries and provisions.



80 cast-iron pots

Can be placed in our units, since their legs are capable of supporting up to 400 kg per unit.

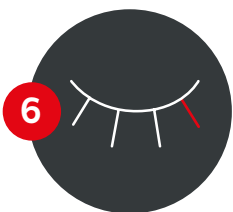


More hard-wearing

Our water-resistant laminate worktops are completely humidity-resistant. You can place your pots and carry on cooking without fear.

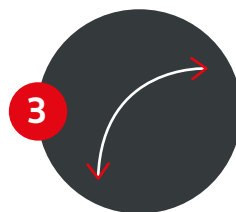
Safer:

Ten-year warranty



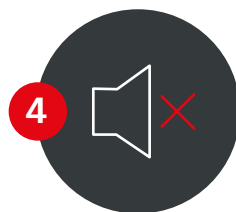
More discreet

Our water-resistant plinths are supplied with a watertight seal in the same colour as the carcass to reduce any risk of water ingress when cleaning the floor.



Anti-topple

No risk of your shelf tipping over thanks to our anti-topple brackets.



Quiet

The remarkably effective and discreet door soft-close is built into the hinge as standard. Bonus: all our fronts are fitted with noise-cancelling pads.



Zero ingress

All carcass and front edgings are bonded with polyurethane glue. Say goodbye to the worry of moisture seeping into your units.



Our warranties



* Subject to the solidity of your walls

I'm the chef in my kitchen!

SCHMIDT INNOVATION

For over 60 years, Schmidt has been examining, testing and designing countless solutions to raise the level of comfort in your kitchen. Superior storage space, easy access and ergonomic designs are part of Schmidt's philosophy for creating easy-living kitchens.

Have you seen this extra-deep unit for storing large plates and dishes?

Our innovations are now yours

AT NO EXTRA COST!



+12 CM MORE STORAGE SPACE



**EXCLUSIVE
62.5 CM-DEEP UNITS**

- + Extra storage space
- + 5 cm more worktop

MORE STORAGE IN YOUR PULL-OUT DRAWERS



**A COLLECTION OF
MILLIMETRE-PERFECT BESPOKE
PULL-OUT UNITS**

- + Drawers tailored to your room for maximum storage without any wasted space

MORE STORAGE SPACE ABOVE THE OVEN



**HOUSING WITHOUT A FILLER
STRIP**

- + A more stylish kitchen
- + Seamlessly integrated appliances

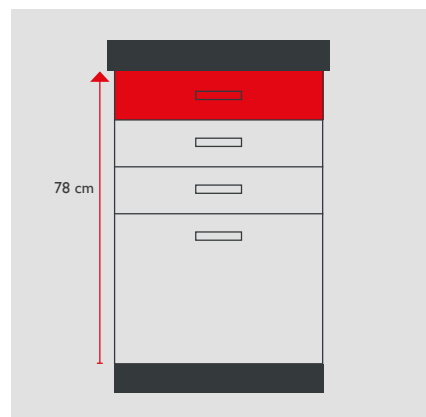
INTERIOR SOLUTIONS TO MATCH YOUR KITCHEN



BESPOKE UNITS

- + New storage ideas
- + An extra touch of design in your room

33% MORE STORAGE SPACE



EVOLUTION 130

- + One extra drawer
- + Unit heights adapted to your height
- + Balanced proportions and with symmetrical lines and volumes

QUICK AND EASY ACCESS TO ALL YOUR PRODUCTS



**LARDER UNIT WITH FULLY
OPENING INTERNAL DRAWERS**

- + Two weeks of provisions for a family of four within easy reach
- + Huge storage capacity

ALL YOUR COOKWARE WITHIN EASY REACH



**PREMIUM PULL-OUT DRAWERS
AS STANDARD**

- + Robust non-slip mat
- + Smoked grey glass sides as standard
- + Soft-close and full-extension as standard

SORT YOUR WASTE MORE EFFECTIVELY



SINK UNIT

- + A built-in large-capacity bin... so practical and big enough for the entire family
- + Foot-operated mechanism as standard

I'm the chef in my kitchen!

PREPPING SURFACES

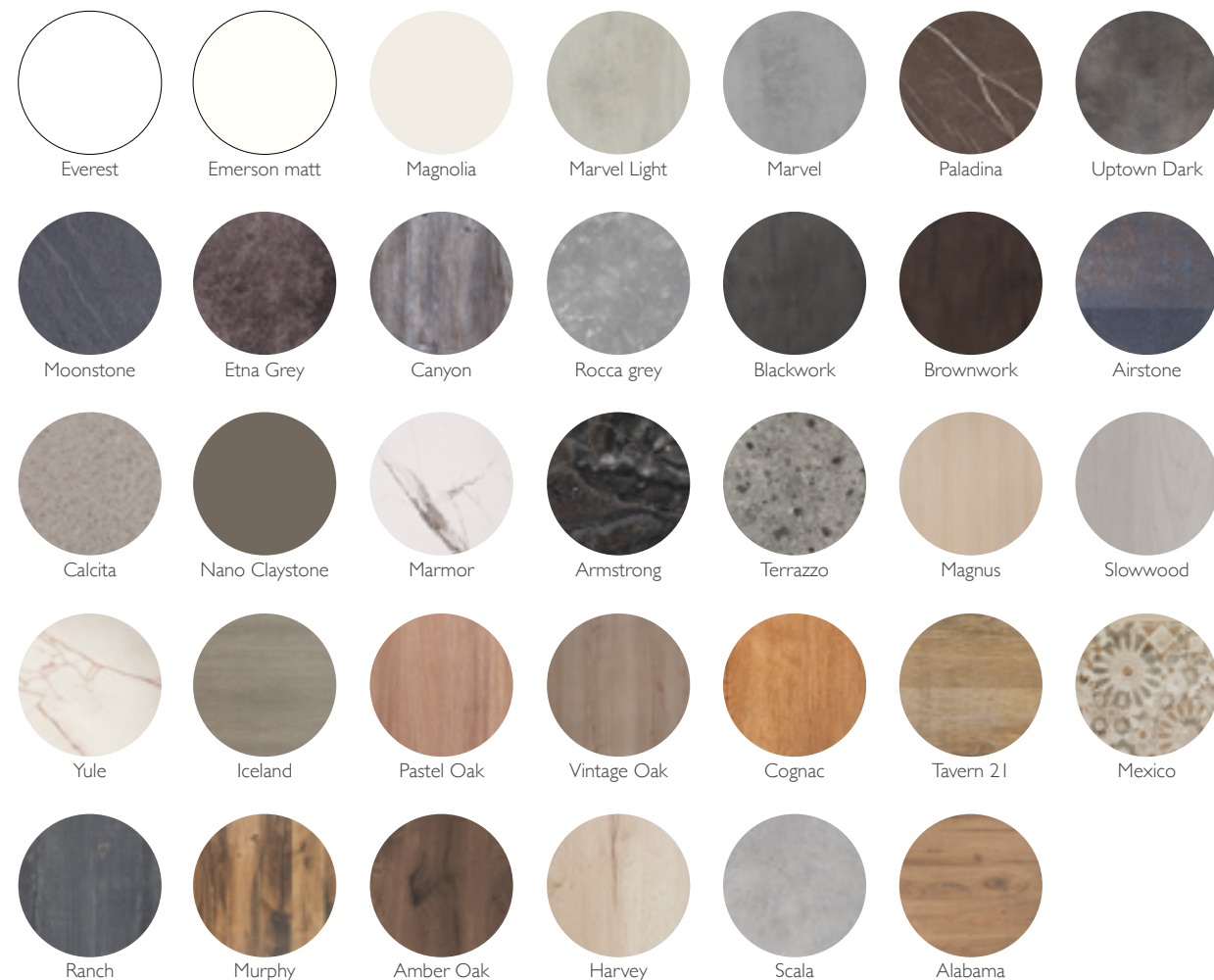
The worktop is what will give your kitchen its character, while withstanding the impacts of everyday life. Our designer will advise you on the different materials and colours available, according to your lifestyle, tastes and budget.



Laminate

With no fewer than 34 colours, our water-resistant worktops allow you to unleash your imagination. Available in thicknesses of 20, 40 and 78 mm.

34
colours
available



Laminate with a nano finish

The ultra-matt surface with its silky-smooth touch is a game-changer. Say goodbye to fingerprints and superficial scratches. They can be removed with a simple wipe of a sponge. Available in thicknesses of 20 and 39 mm.

5 colours available



Compact laminate

This laminate is completely resistant to moisture. Available with a thickness of 12 mm.

4 colours available



Quartz

Quartz worktops feature silica for its hardness and boast a high-end mineral appearance. Available in thicknesses of 12, 20, 40 and 78 mm.

8 colours available



Ceramic

Highly resistant to heat, scratches and moisture. Available in 20, 40 and 78 mm.

6 colours available



Stainless steel

Your worktop is immune to water and heat. A stainless steel worktop is easy to clean and is a perfect match for all front colours, while giving your kitchen a professional finish. Available in 40 and 78 mm



Wood

This natural and authentic material will give your kitchen a touch of style and prestige. Choose from a selection of species, including beech, oak, maple, iroko and walnut. Available in 40 and 78 mm

SCHMIDT'S COMMITMENT CHARTER

- 1

A SINGLE CONTACT POINT
from the design to the commissioning of your kitchen, bathroom or interior solutions.
- 2

A FREE, DETAILED ESTIMATE OF YOUR PROJECT
including the taking of measurements at your home (if required).
- 3

TRANSPARENT PRICING
for appliances: parts and labour.
- 4

UP TO 5 YEARS WARRANTY
for appliances: parts and labour.
- 5

FREE 10-YEARS WARRANTY
for furniture: parts, labour and delivery.
- 6

FREE 25-YEARS WARRANTY
for drawers, pull-out elements and hinges.
- 7

GUARANTEED DELIVERY AND COMPLETE INSTALLATION
in every case.
- 8

GUARANTEED CLEANLINESS
removal of packaging material and cleaning of your kitchen.
- 9

SATISFACTION
measured by a survey.

See the applicable conditions in the showrooms that display this charter.
Subject to T&C in the showroom.

LET'S TALK PRICES

Prices are affected by the quality of the different fittings, finishes and materials.
We are always upfront with our prices to avoid any future disputes – and so we can create a true Schmidt kitchen tailored to the dimensions of your room and also your budget.

BASED ON THE SAME KITCHEN DESIGN, THE FOLLOWING DETAILS EXPLAIN THE DIFFERENCE... WITHOUT AFFECTING QUALITY:



Quartz or laminate worktop?

Although quality is always guaranteed with Schmidt, the price of worktops varies tremendously according to the materials chosen, including quartz, ceramic, laminate or solid wood... the choice matters when working to a budget.



Interior shelves or drawers?

Our drawers and pan drawers keep all your tableware in its rightful place and within easy reach, but they will come with a bigger price tag than a simple shelf. Luckily, your designer will not cut any corners when searching for the right solution to suit your budget!



Lacquer or melamine fronts?

Melamine costs less than lacquer or solid wood. Multiply by the number of fronts in your kitchen and that can make a big difference.



Appliances: induction hob or range cooker?

We offer a wide range of major brand appliances. Your choice of appliances will affect the price of your kitchen.



THANKS TO ALL OUR PARTNERS



www.crozatier.com - www.gameca-rixheim.fr - www.quartz-design.fr - www.inspiration-design.fr
www.baumalu.fr - www.lacerisesurlegateau.fr - www.artisansduson.fr - www.manufacturededigoin.com
www.lalchimiste.paris - www.le-jacquard-francais.fr - www.cristel.com - www.larochere.com
www.revol1768.com - www.leparfait.fr - www.filt1860.fr - www.jeandubost.com - www.util.fr
www.maronbouillie.com - www.magimix.fr - www.seb.fr - www.monluminairefrançais.com
www.luminairedod.com - www.atelierboutdebois.fr - www.tefal.fr - www.uncoqdansletransat.fr

PHOTOGRAPHERS:
Marc Barral Baron / Luc Frey / Visiolab / Shutterstock

STYLIST:
Marie-Christine Schlichter / Juliette Blondel

Photos are for illustrative purposes only and may differ from actual products. As part of our determination to constantly improve production quality, the manufacturer reserves the right to amend the characteristics of the ranges presented in this catalogue. We have taken every care in selecting and producing our fronts. It is perfectly normal for fronts to change over time according to ambient and light conditions. The use of appropriate cleaning products will help maintain their initial appearance.

ADDRESSES OF ALL SCHMIDT CONTACTS AROUND THE WORLD



SCHMIDT FRANCE
(siège : Schmidt Groupe SAS)
BP5 - F - 68660 Lièpvre
Tel: (+33) 03 89 58 24 00

SCHMIDT BELGIUM
(siège : Schmidt Groupe SAS)
BP5 - F - 68660 Lièpvre
Tel: (+33) 03 89 58 24 00

SCHMIDT GERMANY
Hubert Schmidt Str.4
D-66625 Türkismühle
Tel: +49 (0) 68 52 88 70

SCHMIDT SUISSE ALEMANIQUE
Hubert Schmidt Str.4
D-66625 Türkismühle
Tel: +49 (0) 68 52 88 70

SCHMIDT SUISSE ROMANDE
(siège: Schmidt Groupe SAS)
BP5 - F - 68660 Lièpvre
Tel: (+33) 03 89 58 24 00

SCHMIDT SPAIN
Parque empresarial La Marina
C/ Teide, 4, 3ª planta
28703 San Sebastián de los Reyes (Madrid)
Tel: (+34) 916 514 335

SCHMIDT UNITED KINGDOM
12-19 Baron Street
Angel, London
N1 9LL

SCHMIDT NEDERLAND
Postbus 2075
NL-7900 bb Hooerveen
Tel: (+31) 528 280 280

SCHMIDT NORDIC
Slotsgade 22, 1 sal
DK-6000 Kolding
Tel: (+45) 41 31 11 01

REFER FRIENDS AND FAMILY!



Are your friends or family planning to modernise their home interior?
Refer them to us and you will receive a gift from your Schmidt showroom.
They will also receive a benefit for their project, in addition to the quality of Schmidt's expertise and our bespoke products and services.

> VISIT YOUR LOCAL SHOWROOM to find out more about the Schmidt referral programme!

OVER 500 SHOWROOMS WORLDWIDE



The strength of our network lies in our extensive local presence with over 500 showrooms worldwide, including close to 320 in France.

Today, our family-run company is the number **one** French manufacturer*

> CHECK OUT THE SCHMIDT NETWORK by contacting one of our experts.

*according to a CSIL study in April 2021



Schmidt Groupe is incorporated in the national register of furniture and homeware marketers under number FR 001049. This number warrants that Schmidt Groupe, as a member of the Éco-Mobilier eco-organisation, complies with its applicable regulatory obligations in pursuance of Section L 541-10-1 10° of the French Environmental Code.



HOME **SCHMIDT** HOME

> www.homedesign.schmidt

